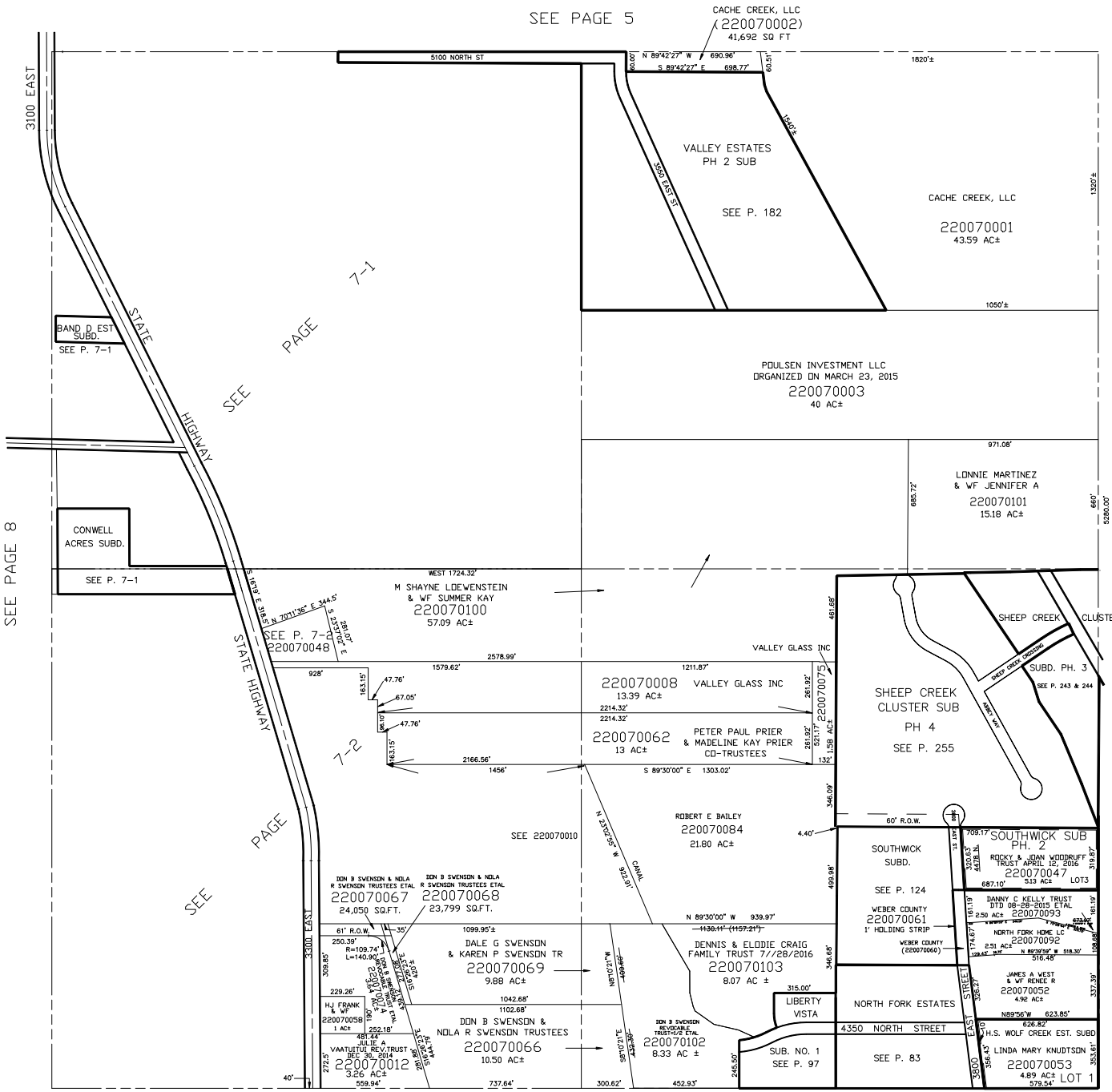


SECTION 17, T.7N., R.1E., S.L.B. & M.

IN WEBER COUNTY
SCALE 1" = 400'

TAXING UNIT: 36

SEE PAGE 5



SEE PAGE 8

SEE PAGE 6

SEE PAGE 11

SEE PAGE 10

NOTE: FOR DESCRIPTION OF THE STATE HIGHWAY SEE PAGES 7-1 & 7-2

NOTE: THIS SECTION IS APPARENTLY LARGER THAN NORMAL SECTION